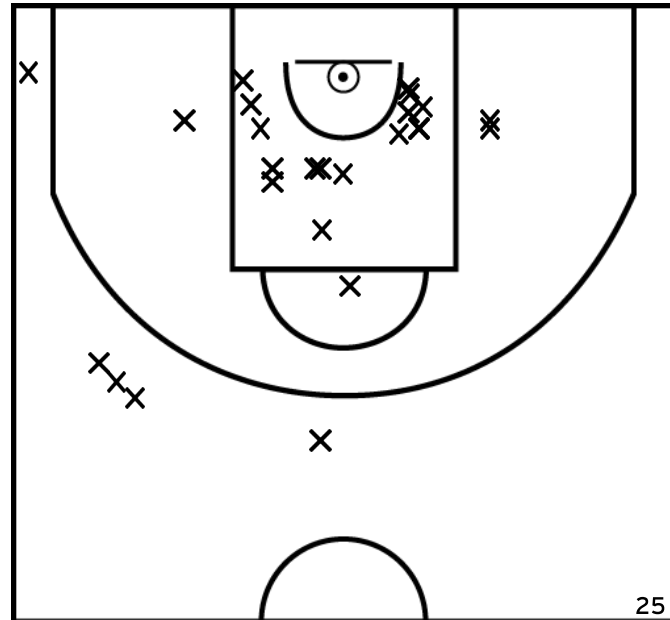


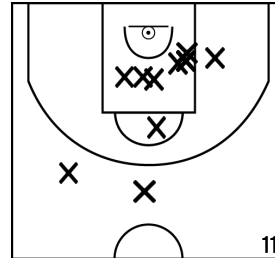
Rencontre: 333 Date: 11/12/22 Heure: 15:30

Arbitre: ZOGLAMI M AUPIC M

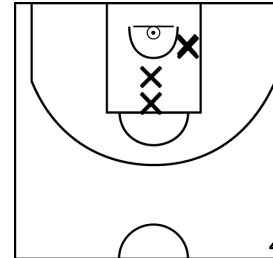
ÉQUIPE EN - CTC PLAINE DE VERSAILLES - BC VILLEPREUX (A)



PÉRIODE 1



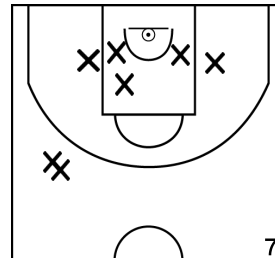
PÉRIODE 3



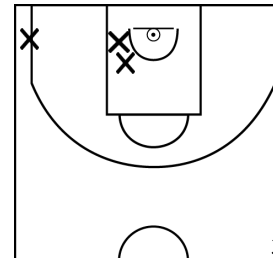
PROLONGATIONS



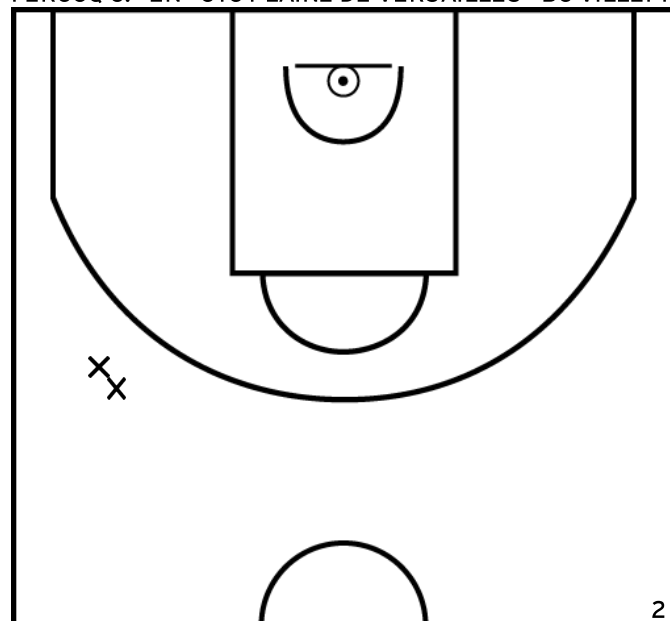
PÉRIODE 2



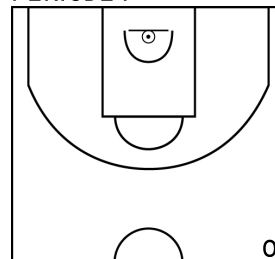
PÉRIODE 4



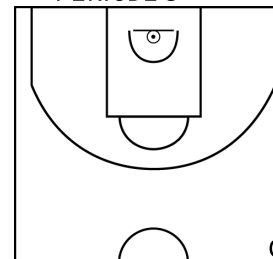
FERCOQ G. - EN - CTC PLAINE DE VERSAILLES - BC VILLEPREUX (A)



PÉRIODE 1



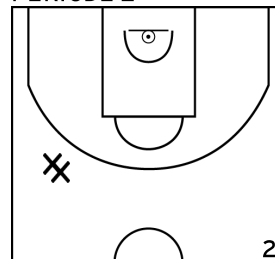
PÉRIODE 3



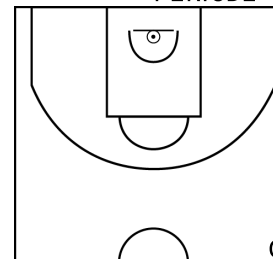
PROLONGATIONS



PÉRIODE 2



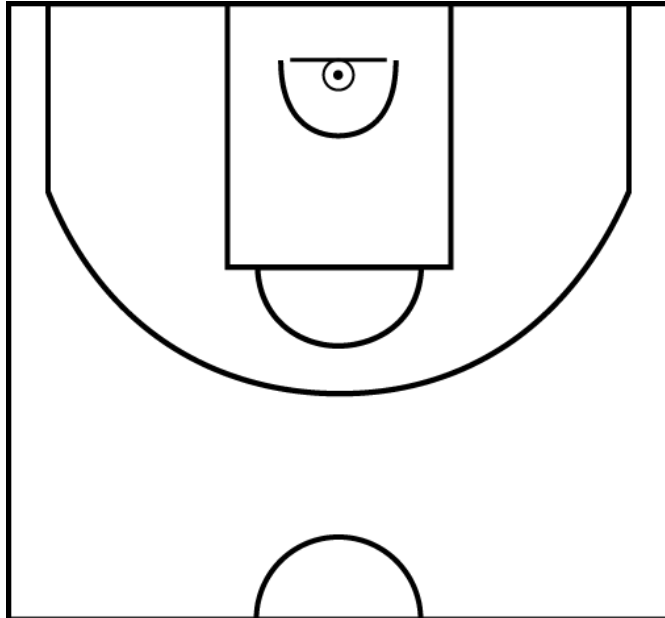
PÉRIODE 4



Rencontre: 333 Date: 11/12/22 Heure: 15:30

Arbitre: ZOGLAMI M AUPIC M

CRAVEIRO A. - EN - CTC PLAINE DE VERSAILLES - BC VILLEPREUX (A)



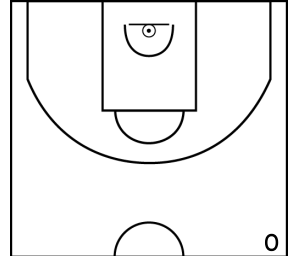
PÉRIODE 1



PÉRIODE 3



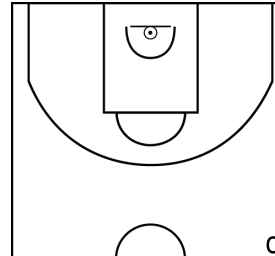
PROLONGATIONS



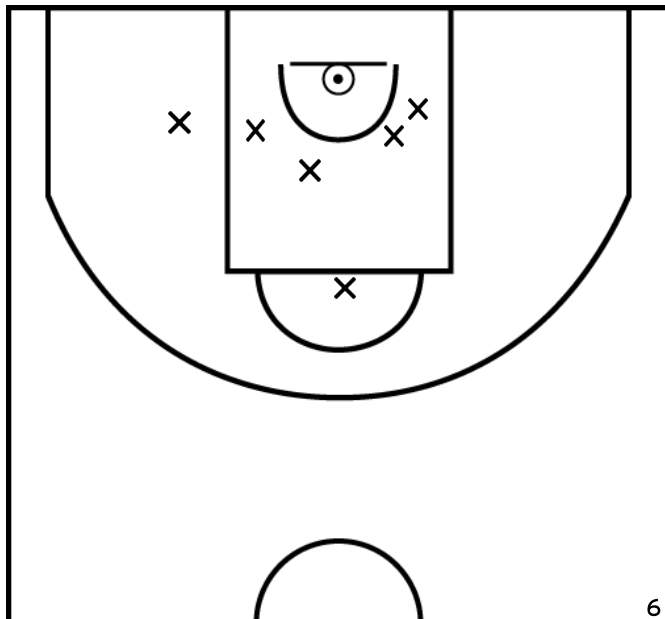
PÉRIODE 2



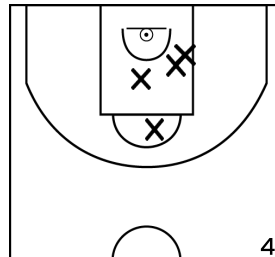
PÉRIODE 4



MONTEIRO ALVES S. - EN - CTC PLAINE DE VERSAILLES - BC VILLEPREUX (A)



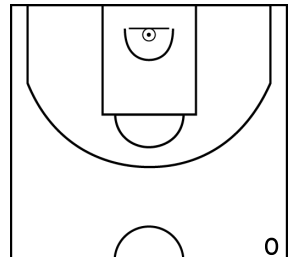
PÉRIODE 1



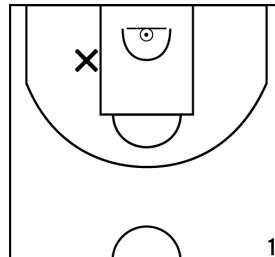
PÉRIODE 3



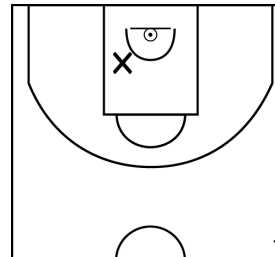
PROLONGATIONS



PÉRIODE 2



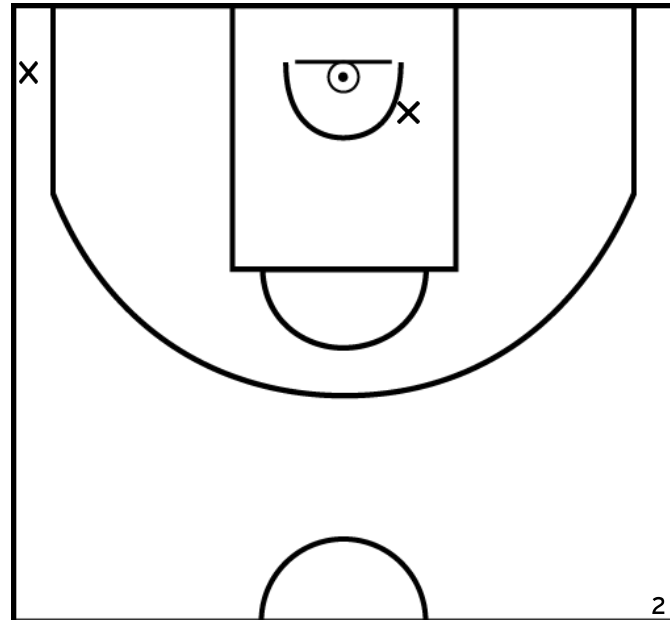
PÉRIODE 4



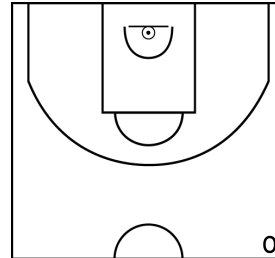
Rencontre: 333 Date: 11/12/22 Heure: 15:30

Arbitre: ZOGLAMI M AUPIC M

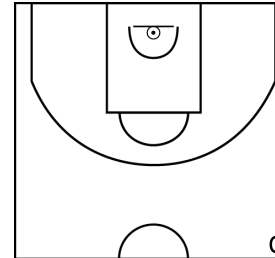
SASIKUMAR S. - EN - CTC PLAINE DE VERSAILLES - BC VILLEPREUX (A)



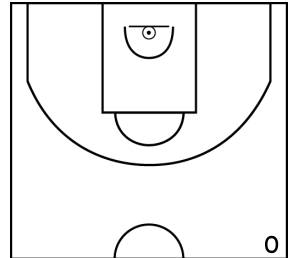
PÉRIODE 1



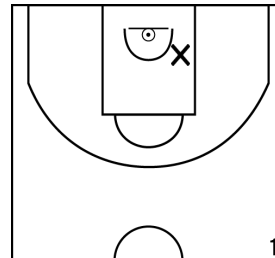
PÉRIODE 3



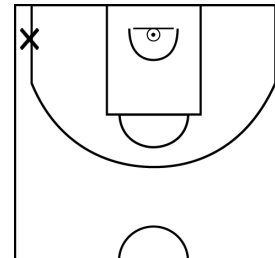
PROLONGATIONS



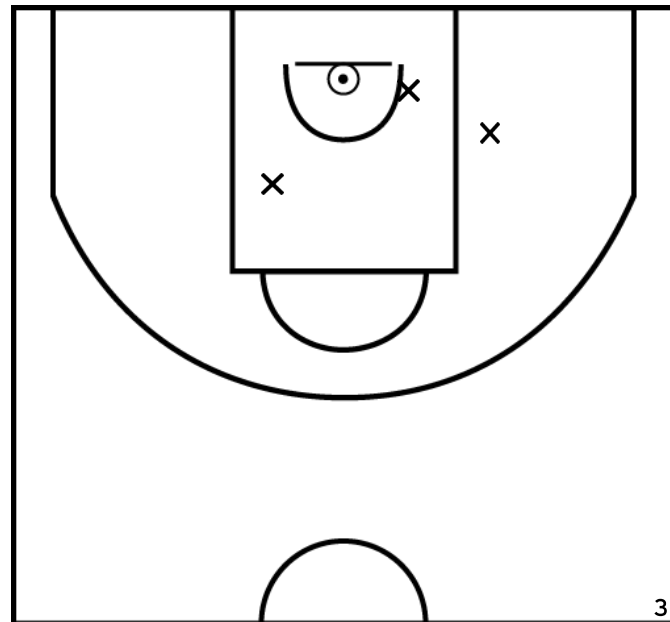
PÉRIODE 2



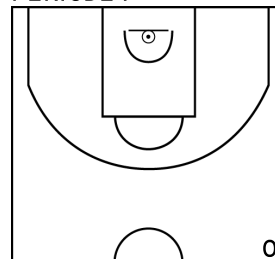
PÉRIODE 4



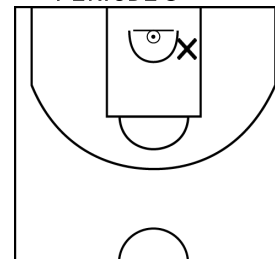
JOUY M. - EN - CTC PLAINE DE VERSAILLES - BC VILLEPREUX (A)



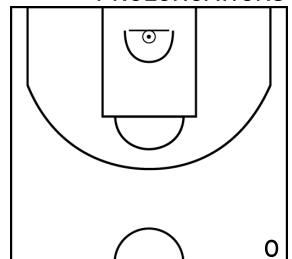
PÉRIODE 1



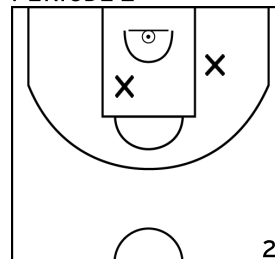
PÉRIODE 3



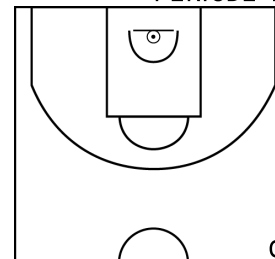
PROLONGATIONS



PÉRIODE 2



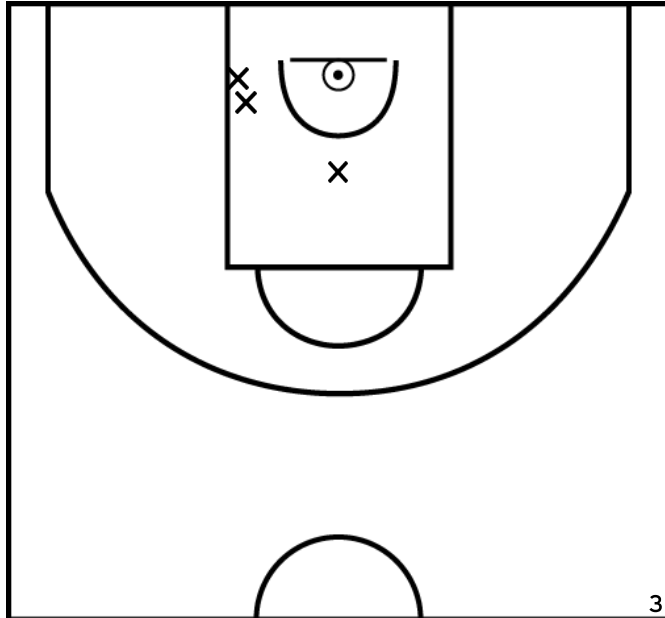
PÉRIODE 4



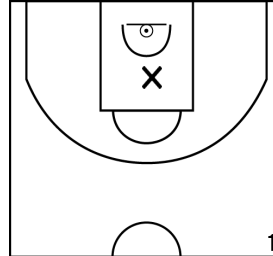
Rencontre: 333 Date: 11/12/22 Heure: 15:30

Arbitre: ZOGLAMI M AUPIC M

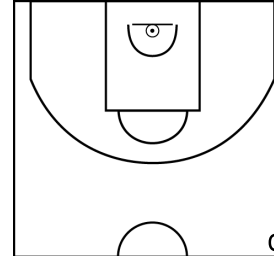
DIAWARA M. - EN - CTC PLAINE DE VERSAILLES - BC VILLEPREUX (A)



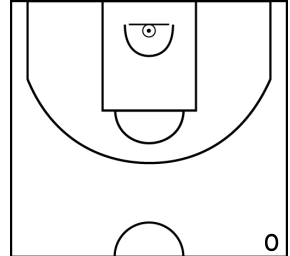
PÉRIODE 1



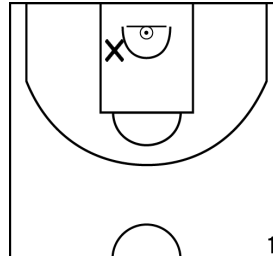
PÉRIODE 3



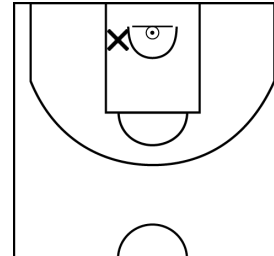
PROLONGATIONS



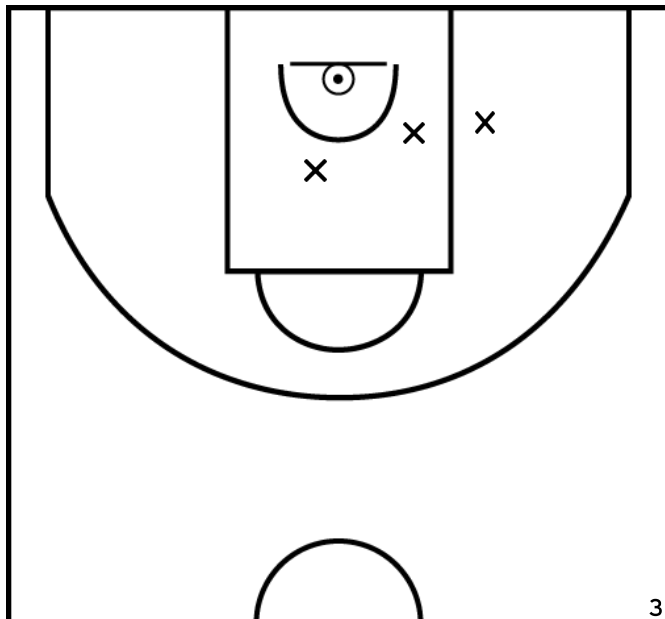
PÉRIODE 2



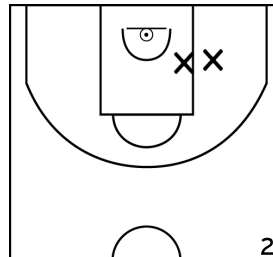
PÉRIODE 4



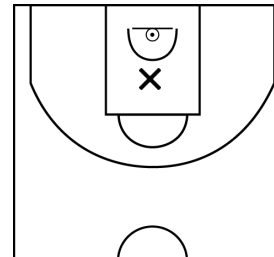
BERTOYE G. - EN - CTC PLAINE DE VERSAILLES - BC VILLEPREUX (A)



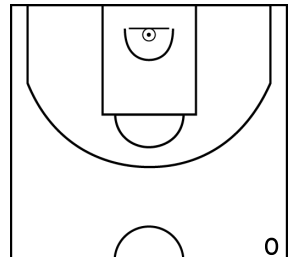
PÉRIODE 1



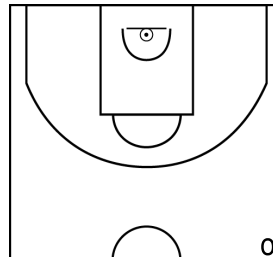
PÉRIODE 3



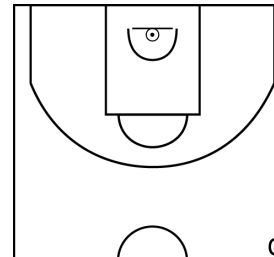
PROLONGATIONS



PÉRIODE 2



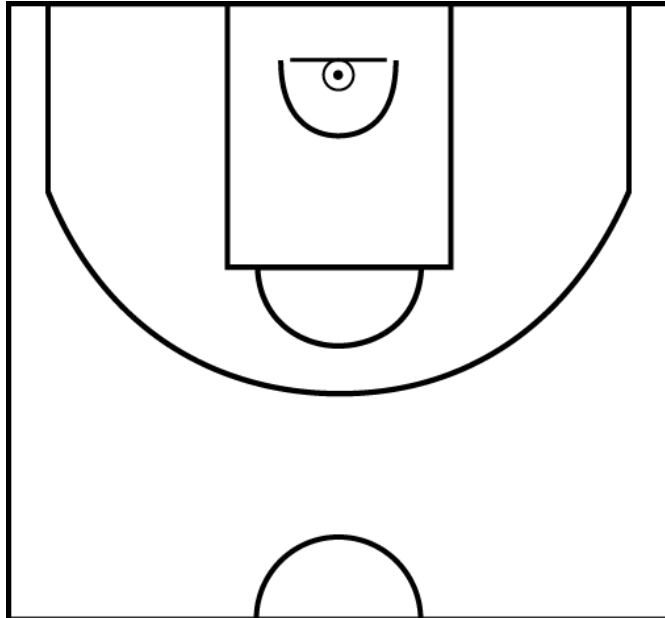
PÉRIODE 4



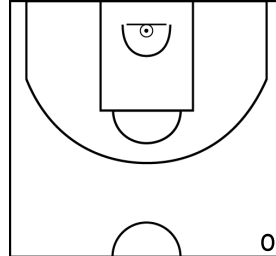
Rencontre: 333 Date: 11/12/22 Heure: 15:30

Arbitre: ZOGLAMI M AUPIC M

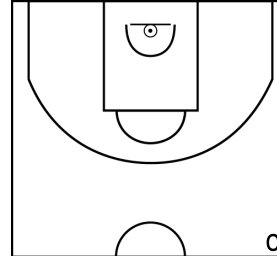
OLIVIER G. - EN - CTC PLAINE DE VERSAILLES - BC VILLEPREUX (A)



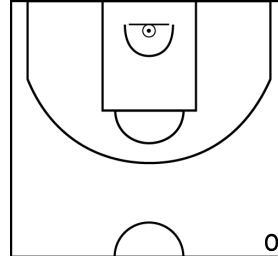
PÉRIODE 1



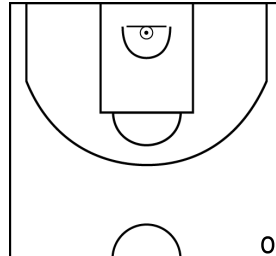
PÉRIODE 3



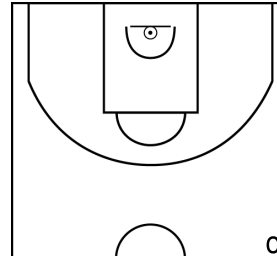
PROLONGATIONS



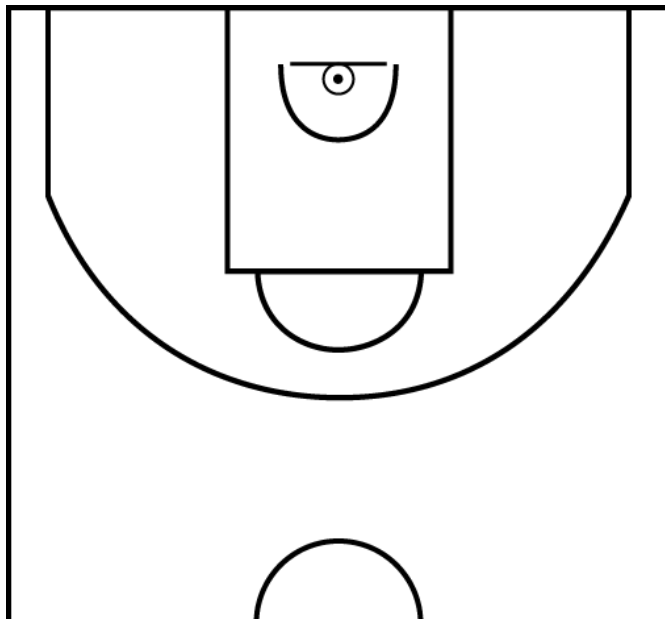
PÉRIODE 2



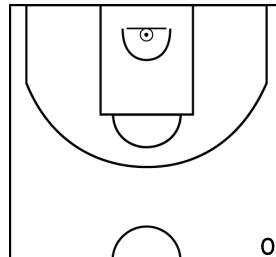
PÉRIODE 4



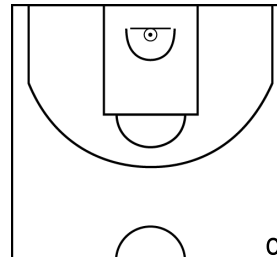
DEMANGE L. - EN - CTC PLAINE DE VERSAILLES - BC VILLEPREUX (A)



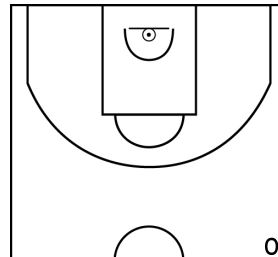
PÉRIODE 1



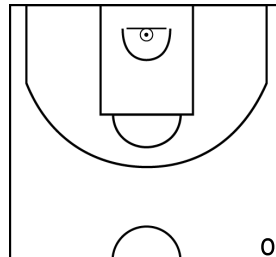
PÉRIODE 3



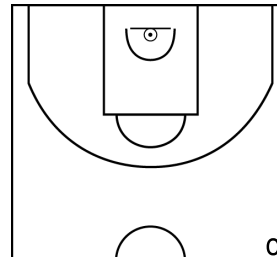
PROLONGATIONS



PÉRIODE 2



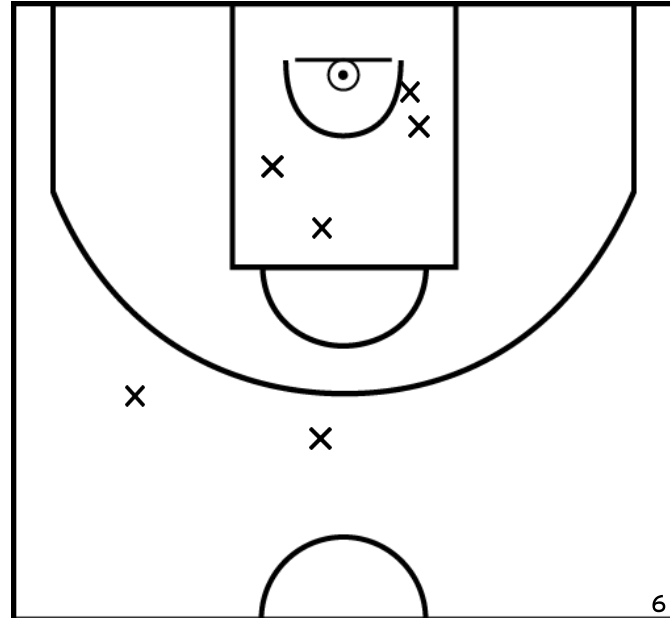
PÉRIODE 4



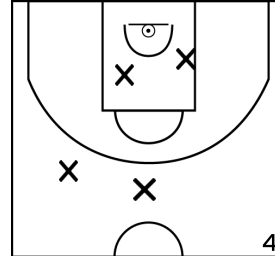
Rencontre: 333 Date: 11/12/22 Heure: 15:30

Arbitre: ZOGLAMI M AUPIC M

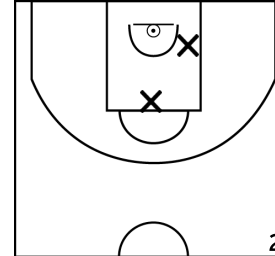
DÉSALLE B. - EN - CTC PLAINE DE VERSAILLES - BC VILLEPREUX (A)



PÉRIODE 1



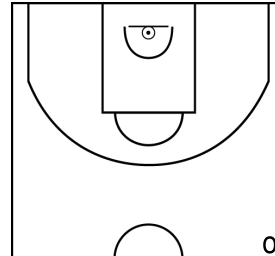
PÉRIODE 3



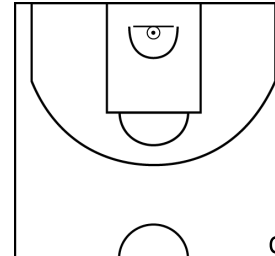
PROLONGATIONS



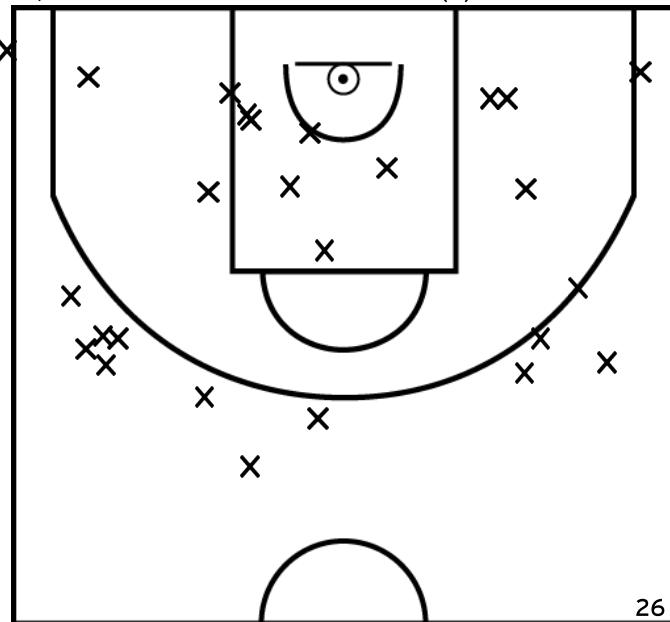
PÉRIODE 2



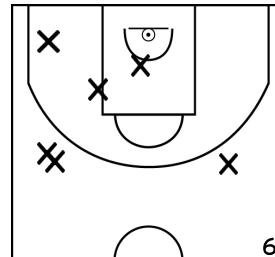
PÉRIODE 4



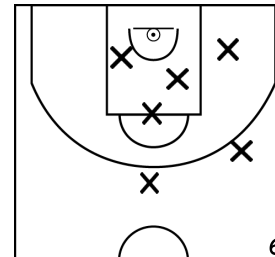
ÉQUIPE CHATOU CROISSY BASKET - 2 (B)



PÉRIODE 1



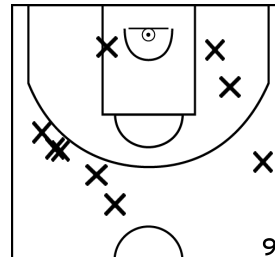
PÉRIODE 3



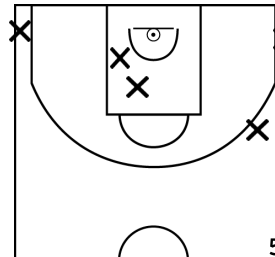
PROLONGATIONS



PÉRIODE 2



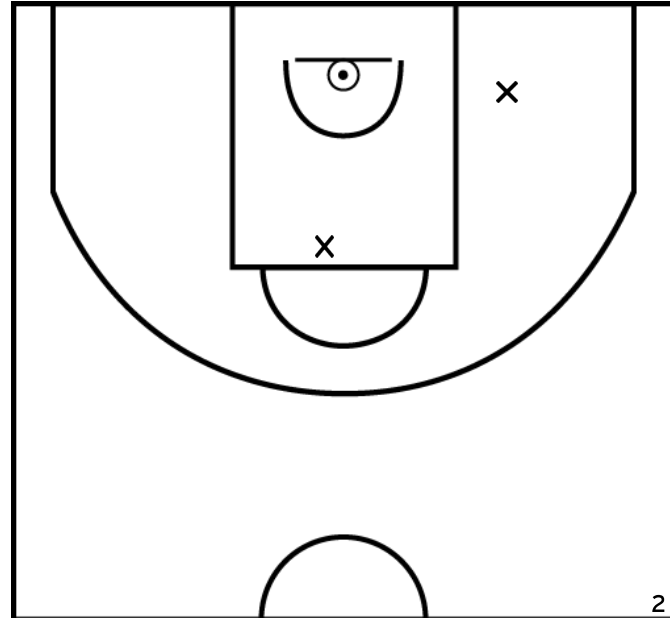
PÉRIODE 4



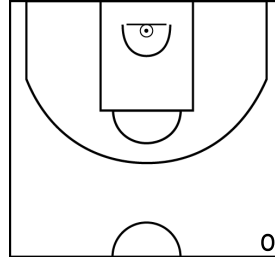
Rencontre: 333 Date: 11/12/22 Heure: 15:30

Arbitre: ZOGLAMI M AUPIC M

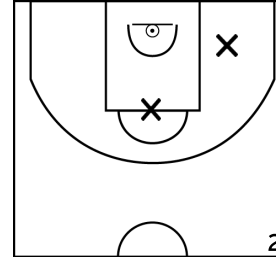
ALLAUX C. - CHATOU CROISSY BASKET - 2 (B)



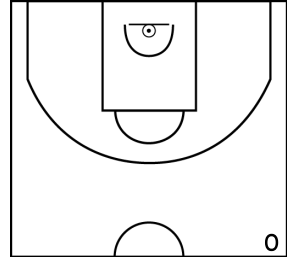
PÉRIODE 1



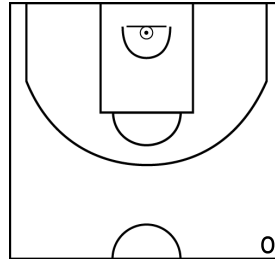
PÉRIODE 3



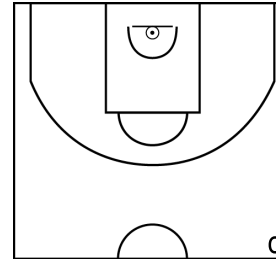
PROLONGATIONS



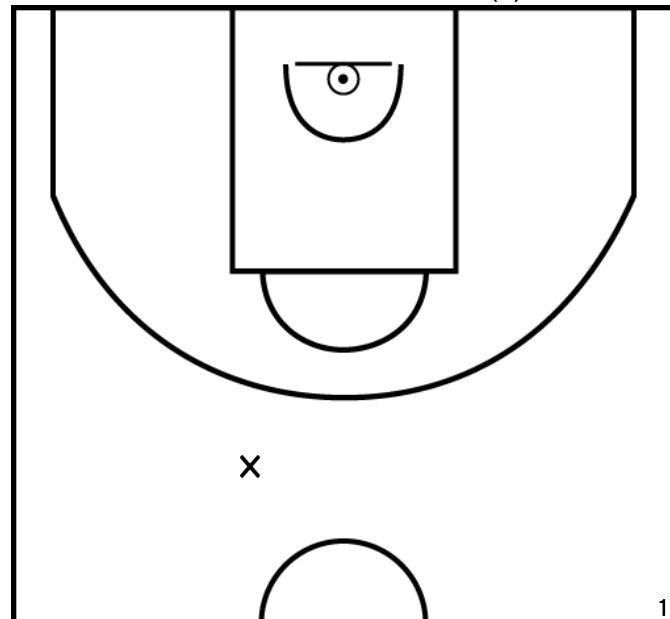
PÉRIODE 2



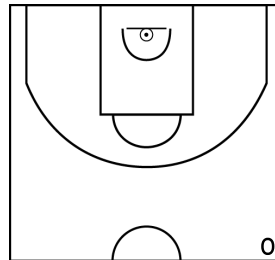
PÉRIODE 4



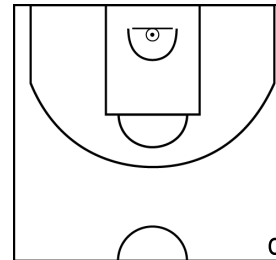
DARMON A. - CHATOU CROISSY BASKET - 2 (B)



PÉRIODE 1



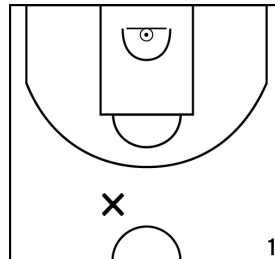
PÉRIODE 3



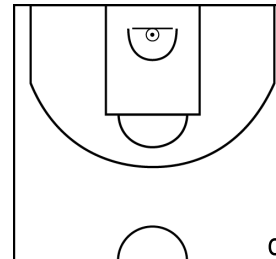
PROLONGATIONS



PÉRIODE 2



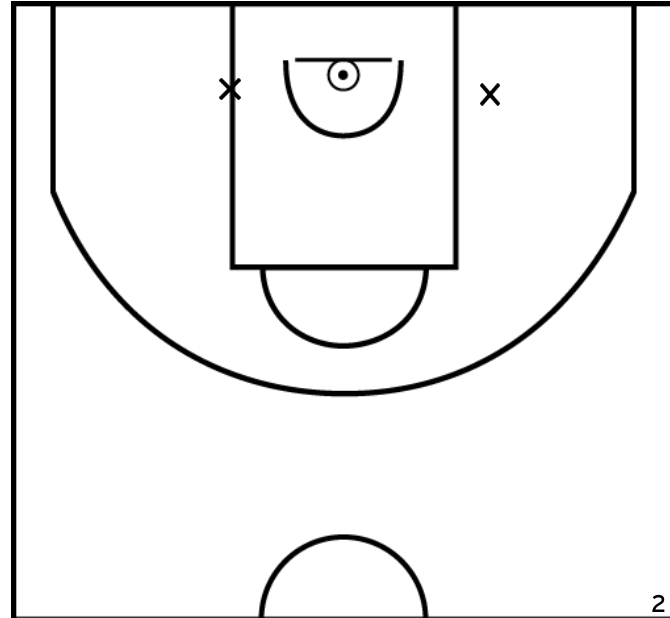
PÉRIODE 4



Rencontre: 333 Date: 11/12/22 Heure: 15:30

Arbitre: ZOGHLAMI M AUPIC M

MONFORT R. - CHATOU CROISSY BASKET - 2 (B)



PÉRIODE 1



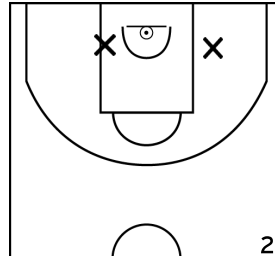
PÉRIODE 3



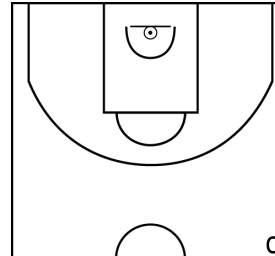
PROLONGATIONS



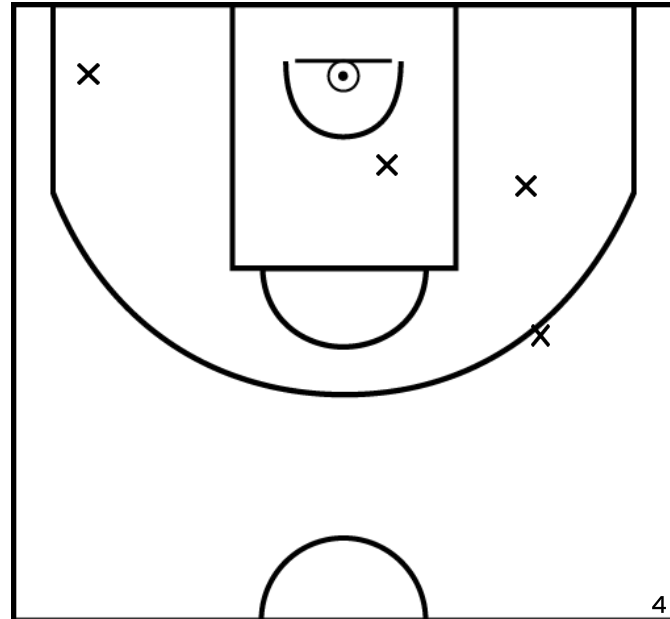
PÉRIODE 2



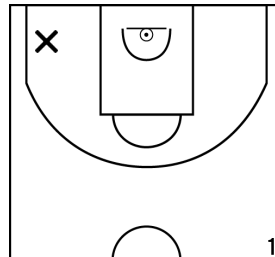
PÉRIODE 4



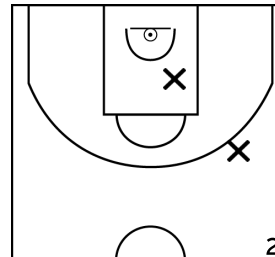
BOUCHET A. - CHATOU CROISSY BASKET - 2 (B)



PÉRIODE 1



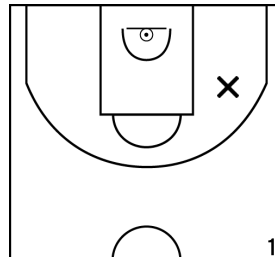
PÉRIODE 3



PROLONGATIONS



PÉRIODE 2



PÉRIODE 4

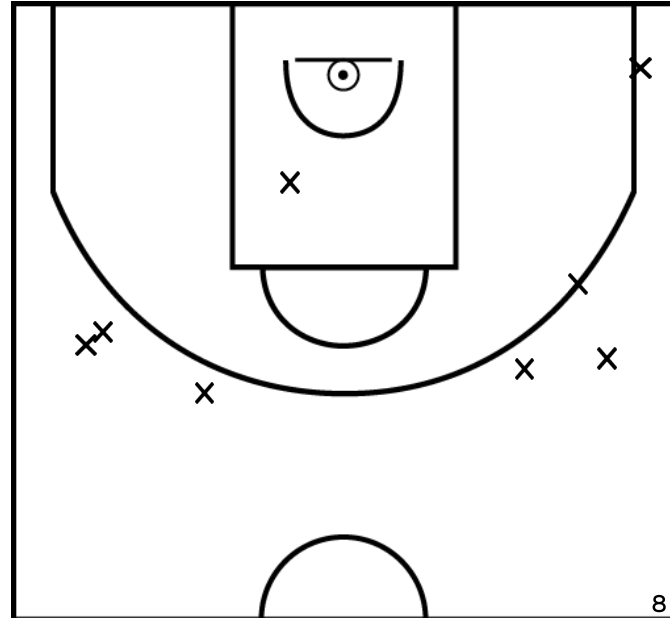




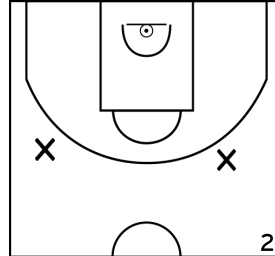
Rencontre: 333 Date: 11/12/22 Heure: 15:30

Arbitre: ZOGLAMI M AUPIC M

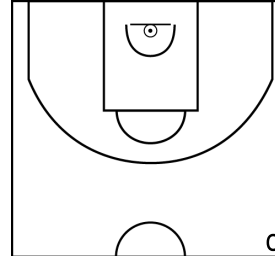
LAGIER B. - CHATOU CROISSY BASKET - 2 (B)



PÉRIODE 1



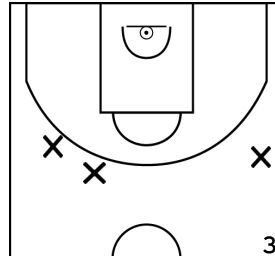
PÉRIODE 3



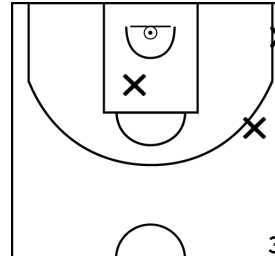
PROLONGATIONS



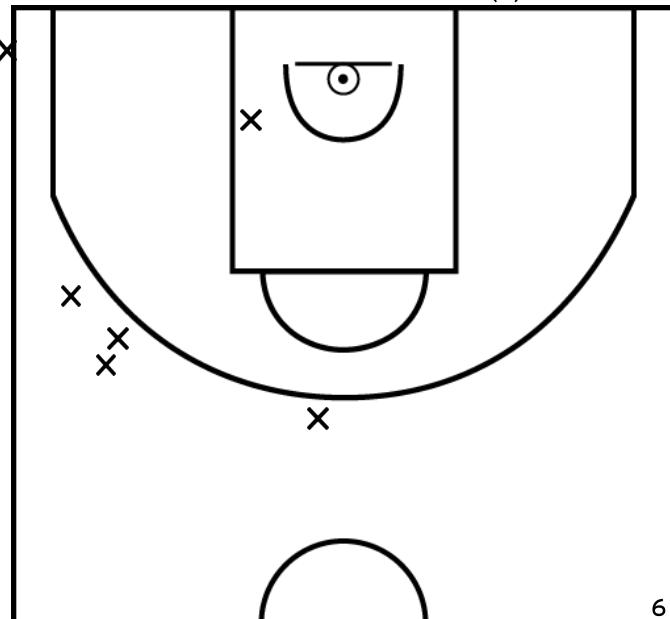
PÉRIODE 2



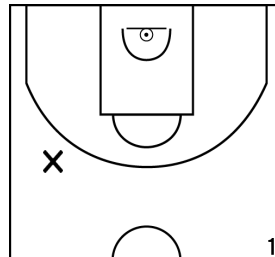
PÉRIODE 4



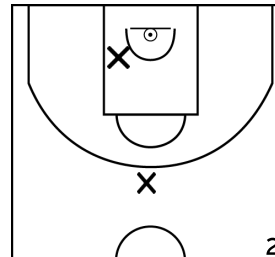
ANTOINE V. - CHATOU CROISSY BASKET - 2 (B)



PÉRIODE 1



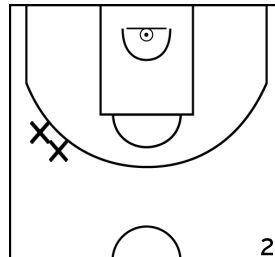
PÉRIODE 3



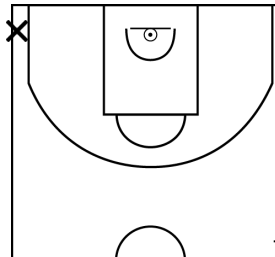
PROLONGATIONS



PÉRIODE 2



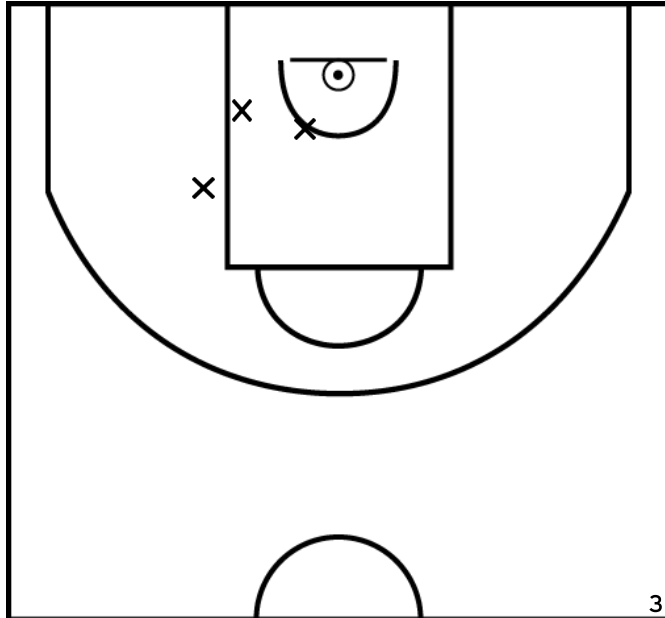
PÉRIODE 4



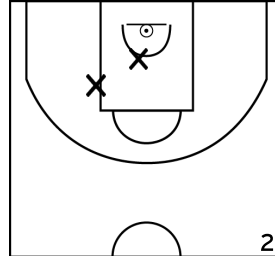
Rencontre: 333 Date: 11/12/22 Heure: 15:30

Arbitre: ZOGHLAMI M AUPIC M

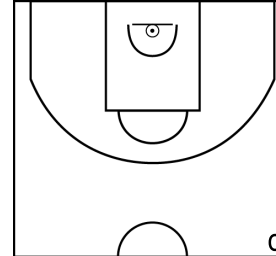
NEVEUX T. - CHATOU CROISSY BASKET - 2 (B)



PÉRIODE 1



PÉRIODE 3



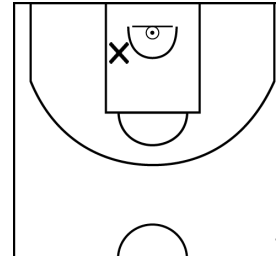
PROLONGATIONS



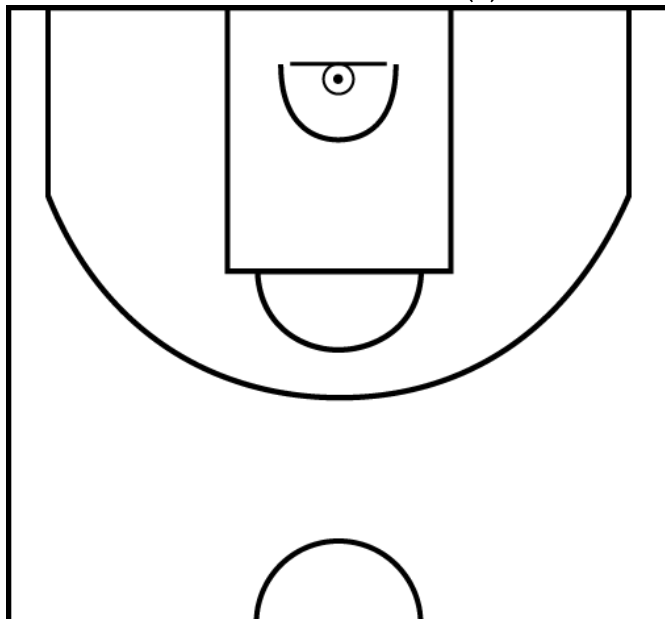
PÉRIODE 2



PÉRIODE 4



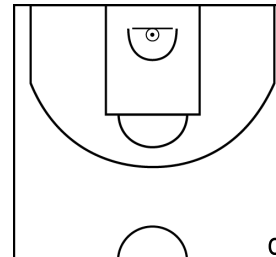
ROOKS K. - CHATOU CROISSY BASKET - 2 (B)



PÉRIODE 1



PÉRIODE 3



PROLONGATIONS



PÉRIODE 2



PÉRIODE 4

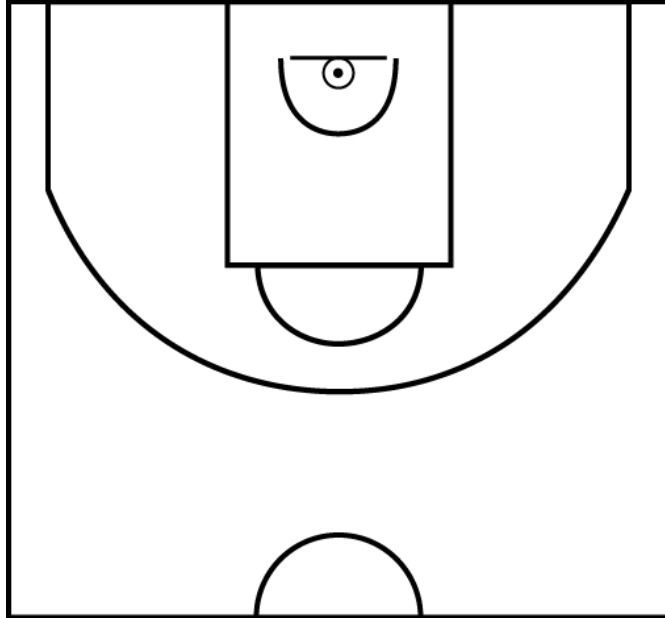


Rencontre: 333 Date: 11/12/22 Heure: 15:30

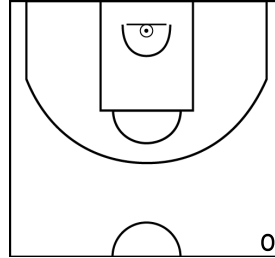
Arbitre: ZOGHLAMI M AUPIC M

---

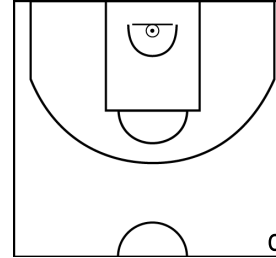
DRU A. - CHATOU CROISSY BASKET - 2 (B)



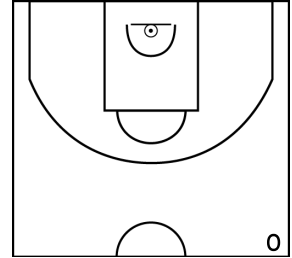
PÉRIODE 1



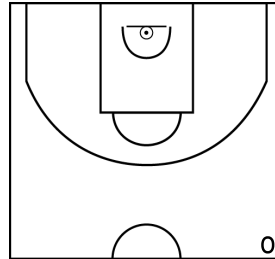
PÉRIODE 3



PROLONGATIONS



PÉRIODE 2



PÉRIODE 4

